



Mikro-Tasarım

SWIR CAMERAS

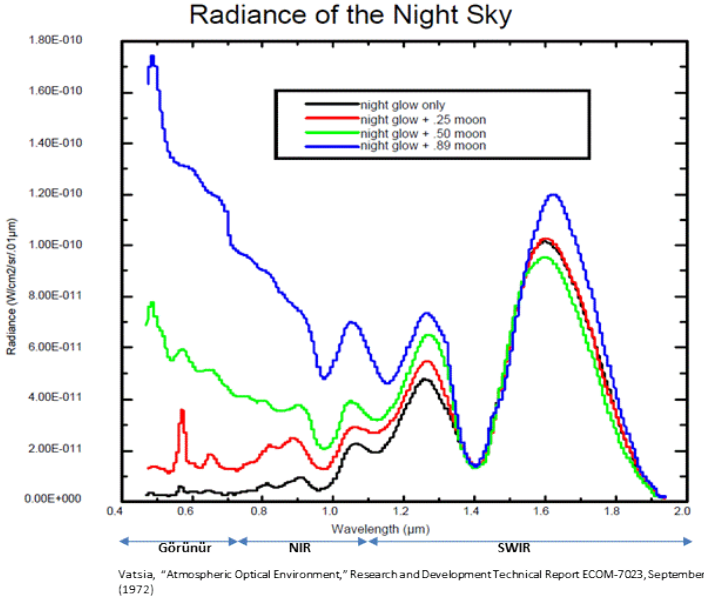


Mikro-Tasarım Elektronik Sanayi ve Ticaret A. Ş.

For more technical details please contact us www.mikro-tasarim.com.tr sales@mikro-tasarim.com.tr

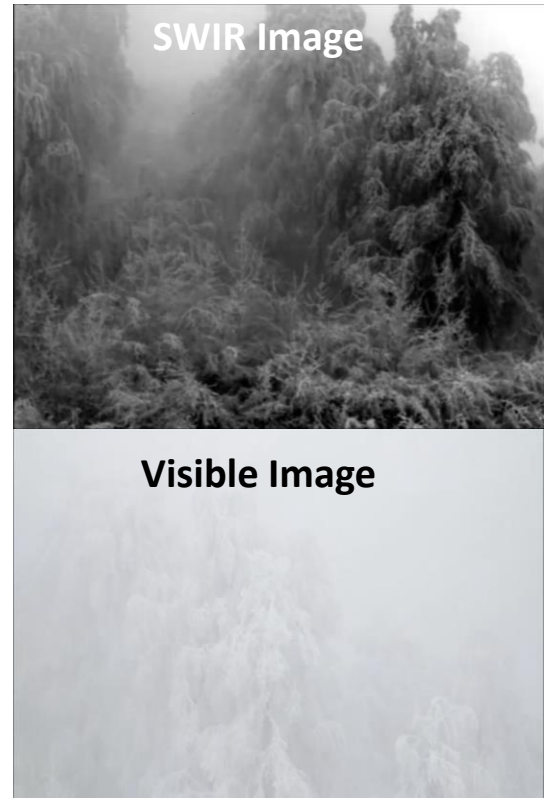
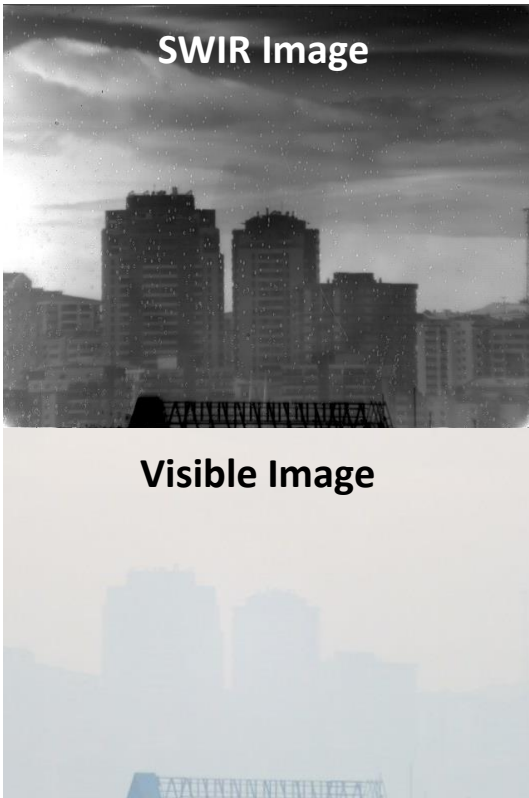
Why SWIR?

SWIR allows imaging at low light using night glove with recognition capability.



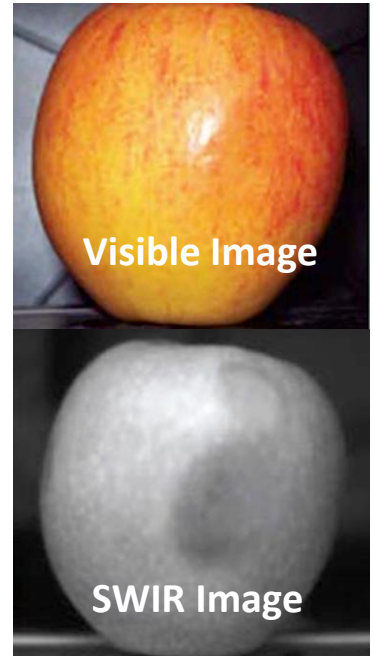
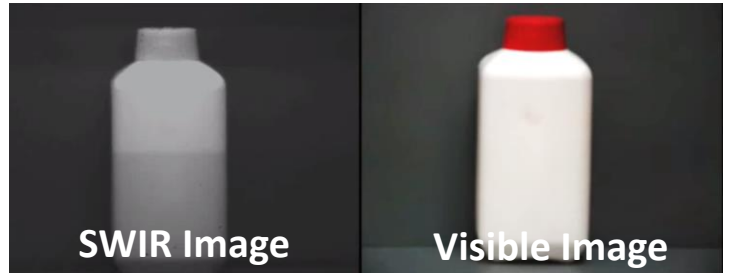
SWIR Application Areas

- Seeing through fog, haze, and fire smoke
- License plate recognition in fog and haze
- Forest fire detection
- Primary source detection on fire
- Human/object detection/recognition at night
- Human/object recognition behind window
- Humidity (newly excavated surface) detection
- Original/imitation detection of
 - Painting, Money, ID Card, etc.
- Seeing laser spot: 940nm/1064nm/1550nm



More SWIR Application Areas

- Medical and health applications
- Seeing through plastic material
- Seeing through paint
- Separation of chemicals
- Use in agricultural applications
- Traffic control
- Scientific imaging
- Detection of contamination
- Quality control activities in factories





MT-MicroCAM4-SW6415

- ✓ a compact SWIR camera
- ✓ has a format of **640 × 512** and pixel pitch of **15 μm**
- ✓ has an InGaAs based FPA
- ✓ working in the 900nm-1700nm SWIR spectral band.
- ✓ has a **Shutter** and **TEC** (Thermo Electric Cooler).
- ✓ built with industrial components (-40/+85°C).
- ✓ measures **58mm × 58mm × 80mm** without optics.
- ✓ weighs less than **410 grams** without optics
- ✓ frame rate **≤50 fps**
- ✓ camlink output
- ✓ IP output (with processing unit)
- ✓ integration time programmable
- ✓ power dissipation **≤ 4W** (with TEC disabled)

MT-MIMC-SW6415-IP

- ✓ a compact SWIR camera
- ✓ has a format of **640 × 512** and pixel pitch of **15 μm**
- ✓ has an InGaAs based FPA
- ✓ working in the 900nm-1700nm SWIR spectral band.
- ✓ has a **Shutter** and **TEC** (Thermo Electric Cooler).
- ✓ built with industrial components (-40/+85°C).
- ✓ measures **51.0 mm × 51.0 mm × 68.7 mm** without optics.
- ✓ weighs less than **220 grams** without optics
- ✓ frame rate **≤50 fps**
- ✓ IP output
- ✓ integration time programmable
- ✓ power dissipation **≤ 5W** (with TEC disabled)

MT-MIMC-SW12815-IP

- ✓ a compact SWIR camera
- ✓ has a format of **1280 × 1024** and pixel pitch of **15 μm**
- ✓ has an InGaAs based FPA
- ✓ working in the 900nm-1700nm SWIR spectral band.
- ✓ has a **Shutter** and **TEC** (Thermo Electric Cooler).
- ✓ built with industrial components (-40/+85°C).
- ✓ measures **55.0 mm × 55.0 mm × 68.9 mm** without optics.
- ✓ weighs less than **300 grams** without optics
- ✓ frame rate **≤50 fps**
- ✓ IP output
- ✓ integration time programmable
- ✓ power dissipation **≤ 5W** (with TEC disabled)