



# Mikro-Tasarım

## SWIR CAMERAS

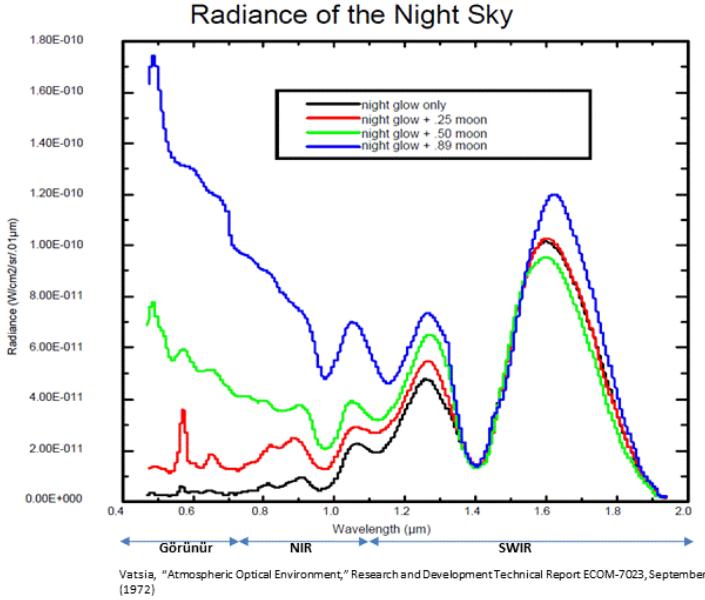


**Mikro-Tasarım Elektronik Sanayi ve Ticaret A. Ş.**

For more technical details please contact us [www.mikro-tasarim.com.tr](http://www.mikro-tasarim.com.tr) [sales@mikro-tasarim.com.tr](mailto:sales@mikro-tasarim.com.tr)

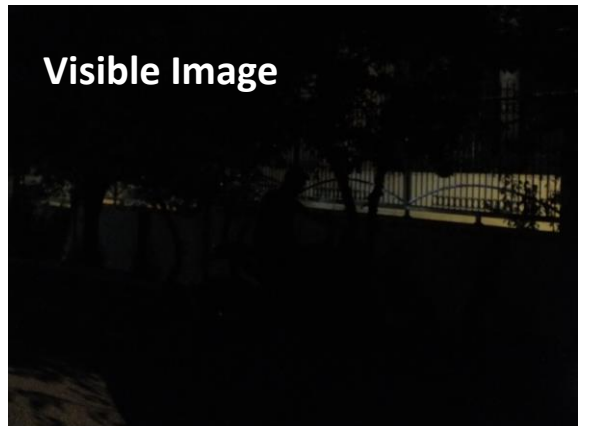
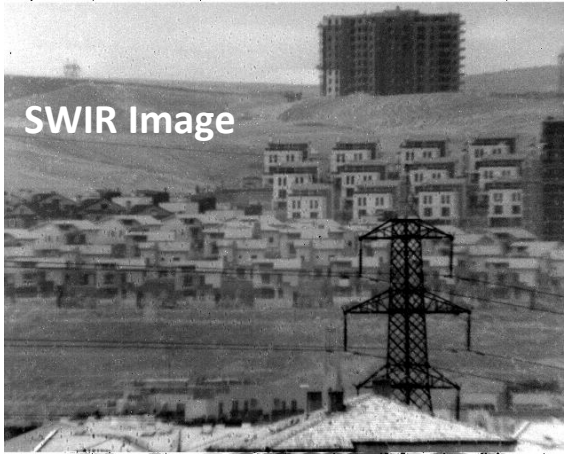
## Why SWIR?

SWIR allows imaging at low light using night glove with recognition capability.



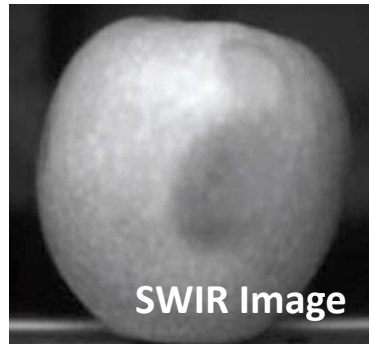
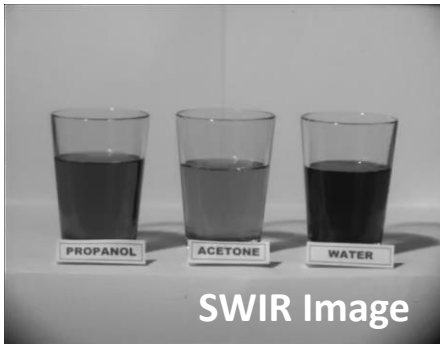
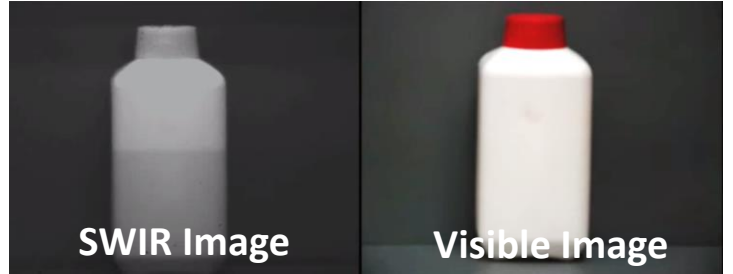
## SWIR Application Areas

- Seeing through fog, haze, and fire smoke
- License plate recognition in fog and haze
- Forest fire detection
- Primary source detection on fire
- Human/object detection/recognition at night
- Human/object recognition behind window
- Humidity (newly excavated surface) detection
- Original/imitation detection of
  - Painting, Money, ID Card, etc.
- Seeing laser spot: 940nm/1064nm/1550nm



## More SWIR Application Areas

- Medical and health applications
- Seeing through plastic material
- Seeing through paint
- Separation of chemicals
- Use in agricultural applications
- Traffic control
- Scientific imaging
- Detection of contamination
- Quality control activities in factories



## MT-MIMC-SW6415-IP

- ✓ has a format of **640 × 512** and pixel pitch of **15 µm**
- ✓ has an InGaAs based FPA
- ✓ working in 900nm-1700nm SWIR spectral band.
- ✓ includes a **Shutter** and a **TEC** (Thermo Electric Cooler).
- ✓ built with industrial components (-40/+85°C).
- ✓ measures **51.0 mm × 51.0 mm × 68.7 mm** w/o optics.
- ✓ weighs less than **220 grams** without optics
- ✓ frame rate **≤50 fps**
- ✓ IP stream (RTSP), Ethernet, H.264/265 USB2.0 UVC
- ✓ integration time programmable
- ✓ power dissipation **≤ 5W** (with TEC disabled)



## MT-MIMC-SW12810-IP

- ✓ has a format of **1280 × 1024** and pixel pitch of **10 µm**
- ✓ has an InGaAs based FPA
- ✓ working in 900nm-1700nm SWIR spectral band.
- ✓ includes a **Shutter** and a **TEC** (Thermo Electric Cooler).
- ✓ built with industrial components (-40/+85°C).
- ✓ measures **55.0 mm × 55.0 mm × 68.4 mm** w/o optics.
- ✓ weighs less than **300 grams** without optics
- ✓ frame rate **≤50 fps**
- ✓ IP stream (RTSP), Ethernet, H.264/265 USB2.0 UVC
- ✓ integration time programmable
- ✓ power dissipation **≤ 5W** (with TEC disabled)



## MT-MIMC-SW10210-IP

- ✓ has a format of **1024 × 768** and pixel pitch of **10 µm**
- ✓ has an InGaAs based FPA
- ✓ working in 900nm-1700nm SWIR spectral band.
- ✓ includes a **Shutter** and a **TEC** (Thermo Electric Cooler).
- ✓ built with industrial components (-40/+85°C).
- ✓ measures **55.0 mm × 55.0 mm × 68.4 mm** w/o optics.
- ✓ weighs less than **300 grams** without optics
- ✓ frame rate **≤50 fps**
- ✓ IP stream (RTSP), Ethernet, H.264/265 USB2.0 UVC
- ✓ integration time programmable
- ✓ power dissipation **≤ 5W** (with TEC disabled)

## MT-MicroCAM4-SW6415

- ✓ has a format of **640 × 512** and pixel pitch of **15 µm**
- ✓ has an InGaAs based FPA
- ✓ working in 900nm-1700nm SWIR spectral band.
- ✓ includes a **Shutter** and a **TEC** (Thermo Electric Cooler).
- ✓ built with industrial components (-40/+85°C).
- ✓ measures **58mm × 58mm × 80mm** without optics.
- ✓ weighs less than **410 grams** w/o optics
- ✓ frame rate **≤50 fps**
- ✓ camlink output and IP output (with processing unit)
- ✓ integration time programmable
- ✓ power dissipation **≤ 4W** (with TEC disabled)



## MT-MIMC-SW12815-IP

- ✓ has a format of **1280 × 1024** and pixel pitch of **15 µm**
- ✓ has an InGaAs based FPA
- ✓ working in 900nm-1700nm SWIR spectral band.
- ✓ includes a **Shutter** and a **TEC** (Thermo Electric Cooler).
- ✓ built with industrial components (-40/+85°C).
- ✓ measures **55.0 mm × 55.0 mm × 68.9 mm** w/o optics.
- ✓ weighs less than **300 grams** without optics
- ✓ frame rate **≤50 fps**
- ✓ IP stream (RTSP), Ethernet, H.264/265 USB2.0 UVC
- ✓ integration time programmable
- ✓ power dissipation **≤ 5W** (with TEC disabled)



## MT-MIMC-SW6410-IP

- ✓ has a format of **640 × 512** and pixel pitch of **10 µm**
- ✓ has an InGaAs based FPA
- ✓ working in 900nm-1700nm SWIR spectral band.
- ✓ includes a **Shutter** and a **TEC** (Thermo Electric Cooler).
- ✓ built with industrial components (-40/+85°C).
- ✓ measures **51 mm × 51 mm × 62 mm** w/o optics.
- ✓ weighs less than **210 grams** without optics
- ✓ frame rate **≤50 fps**
- ✓ IP stream (RTSP), Ethernet, H.264/265 USB2.0 UVC
- ✓ integration time programmable
- ✓ power dissipation **≤ 5W** (with TEC disabled)